

Web Services Framework

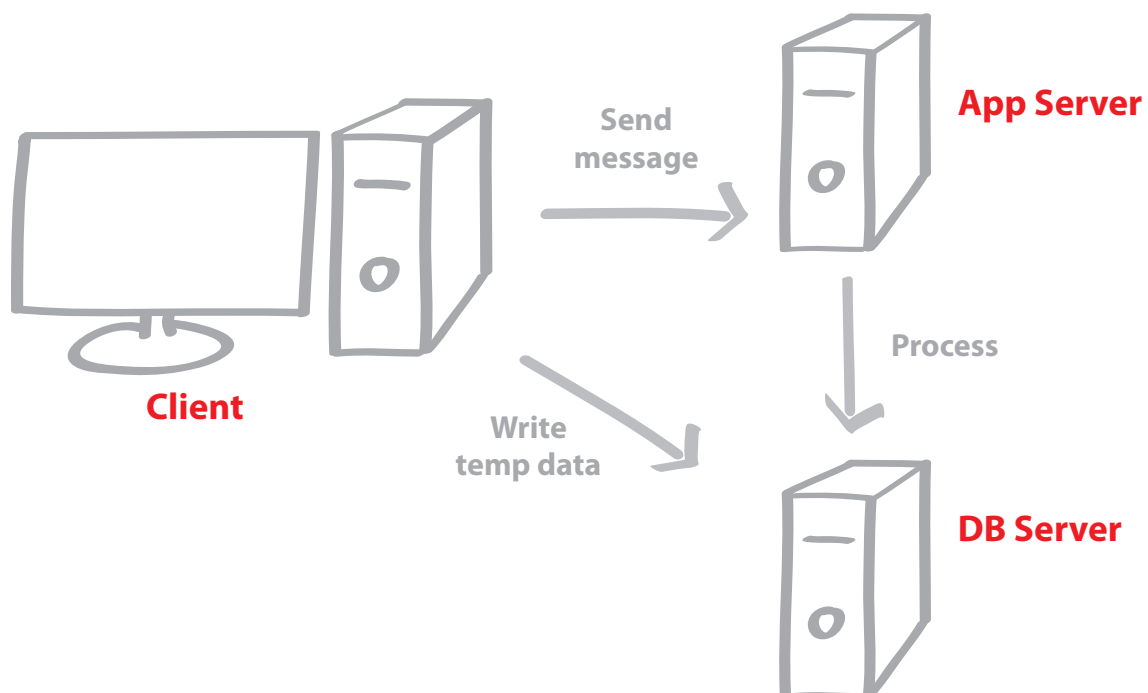
Would you like to integrate your Elite Enterprise system more tightly within your corporate infrastructure?

Would you like to process transactions in your workflow and approval system and then have the data post directly into Elite whilst maintaining full Elite validation?

The Web Services Framework provides you with a complete solution to your Enterprise integration problems.

Enterprise has a standard processing model flow.

- First the client writes to a temp table (or tables) on the DB server.
- Next the client sends a message to the Enterprise application server over a specific TCP port with the appropriate messaging structure to process data in the temp tables.
- Thirdly, the application server carries out the processing required and updates a table with the result of its processing.
- Finally the client PC reads the result and carries on/reports an error.

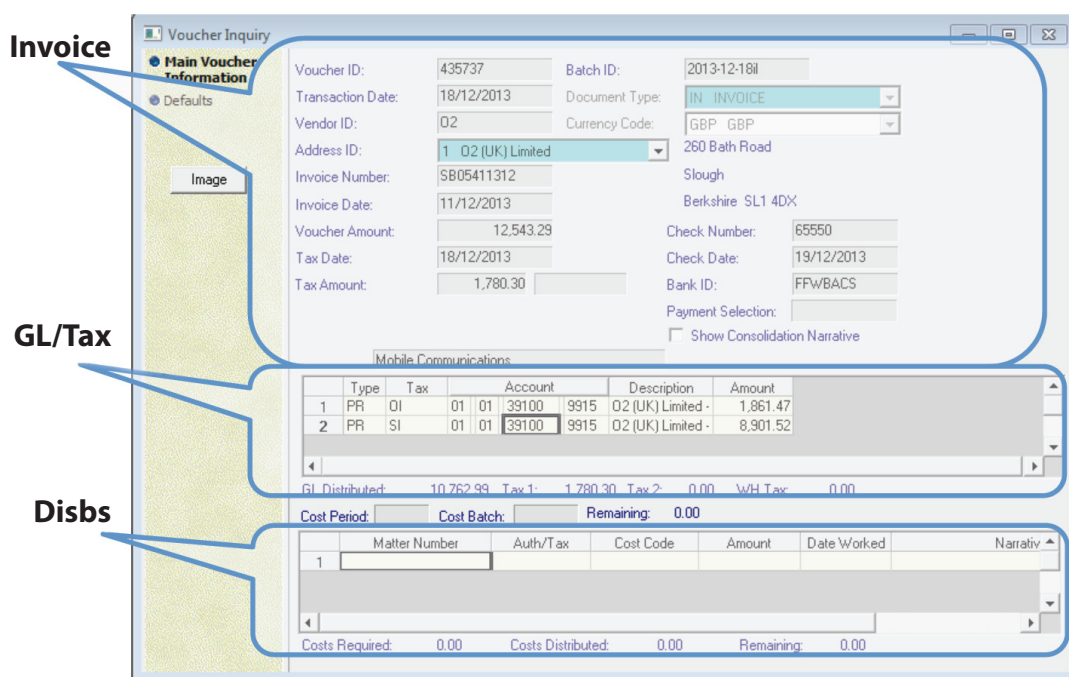


The Web Service Framework encapsulates this communication process between a client and the servers to the extent that any third-party software that can consume a standard SOAP web service can now access ALL Enterprise functionality programmatically. Since the Elite application server is processing the request, all Elite's standard validation, auditing and logging is adhered to.

By using our communications layer and constructing a web service layer on top we have been able to provide our clients with a number of integrations that are simply not available from Elite. Popular options include:

- Invoice posting incorporating GL and Costs
- Client account transfers and receipts

The framework turns a client invoice capture screen like this...



...into a programmable integration tool like this:

